

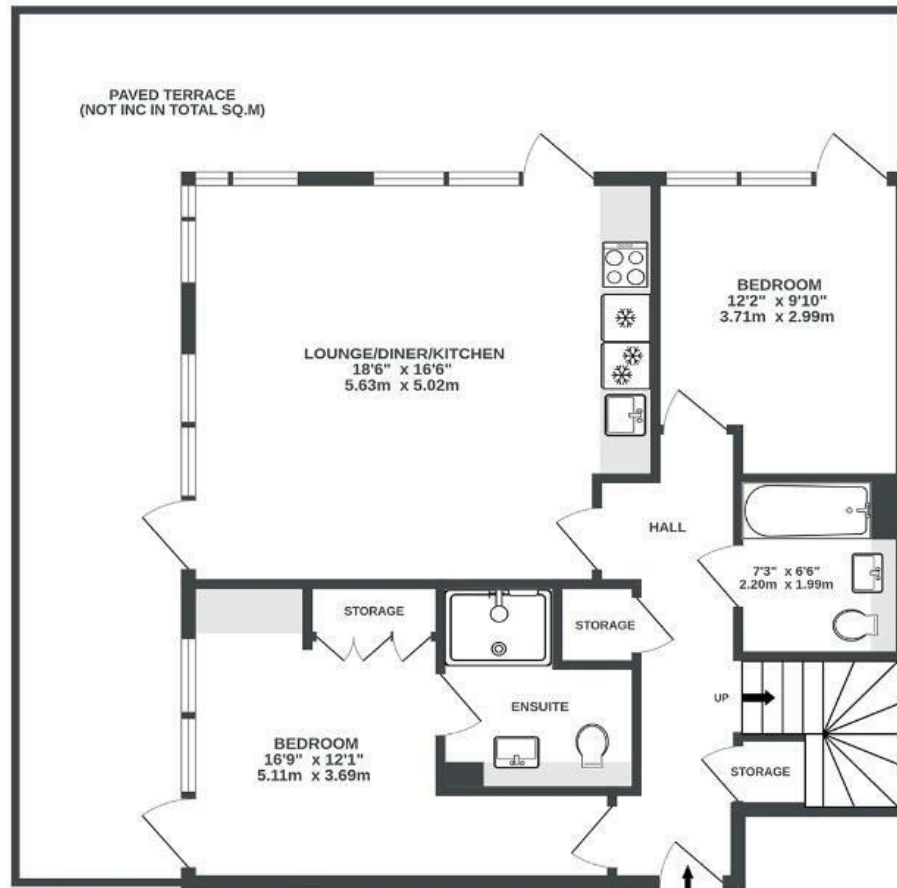
Lake Shore Drive

BISHOPSWORTH

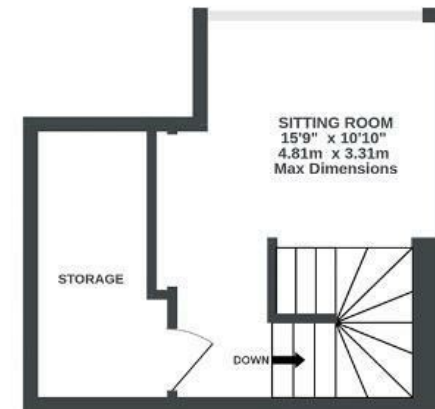
APPROXIMATE FLOOR AREA
93.4 SQM / 1006 SQFT



GROUND FLOOR
783 sq.ft. (72.8 sq.m.) approx.



1ST FLOOR - MEZZANINE
222 sq.ft. (20.6 sq.m.) approx.



Illustrations are for reference purposes only, measurements are approximate, not to scale.

Boardwalk

Lakeshore Drive

, BRISTOL



£275,000



2 Bedrooms



BS13 7BD



2 Bathrooms

"The best thing about living here has been the access to the green space around the flat. Sunny afternoons spent with friends enjoying the patio and surrounding green space, being able to move from the kitchen to outside so easily. Or spending the evenings with the doors open, listening to the birds gives a sense of calm that's hard to find in Bristol."

